

## Switch boxes



**SIL3**

### DS300-B ATEX

Box for visual and electrical position feedback.

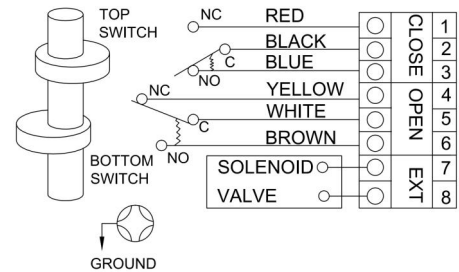
The box is equipped with two easy-set cams with tool free calibration.

Big size 3D rotor provides high visibility confirmation of valve position.

### Technical Features

Housing: Aluminium, polyester coated  
 Cover: Transparent polycarbonate  
 Shaft: Stainless steel  
 Screws: Stainless steel  
 ATEX: II 2G Ex db IIC T6 Gb  
 II 2D Ex tb IIIC T80°C Db

Protection class: IP66  
 Temperature range: -20...+60°C  
 Switches: 2pcs electromechanical Honeywell SPDT  
 Rating: Max 16A/250VAC/DC  
 Cable entry: 2x M20x1,5  
 Mounting bracket: Stainless steel. Adjustable for actuator pinion height 20 and 30mm.



### Dimensions

