

## Switch boxes

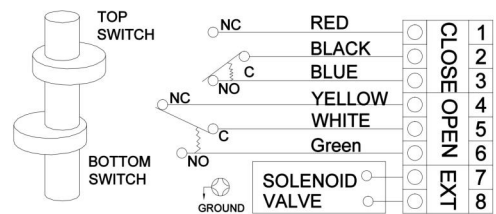


### APL210

Box for visual and electrical position feedback. The box is equipped with two easy-set cams with tool free calibration. Big size 3D rotor provides high visibility confirmation of valve position.

#### Technical Features

|                    |   |
|--------------------|---|
| Housing:           | Aluminium, polyester coated   |
| Cover:             | Transparent polycarbonate   |
| Shaft:             | Stainless steel   |
| Screws:            | Stainless steel   |
| Protection class:  | IP67  |
| Temperature range: | -20...+60°C   |
| Switches:          | 2pcs electromechanical Honeywell SPDT                               |
| Rating:            | 3A/24VDC, 5A/250VAC   |
| Cable entry:       | 2x M20x1,5  |
| Mounting bracket:  | Stainless steel. Adjustable for actuator pinion height 20 and 30mm. |



#### Dimensions

