

Wafer, Hand Lever



725000

Full bore wafer type ball valve suitable for flanges PN10/16/40/ANSI150.

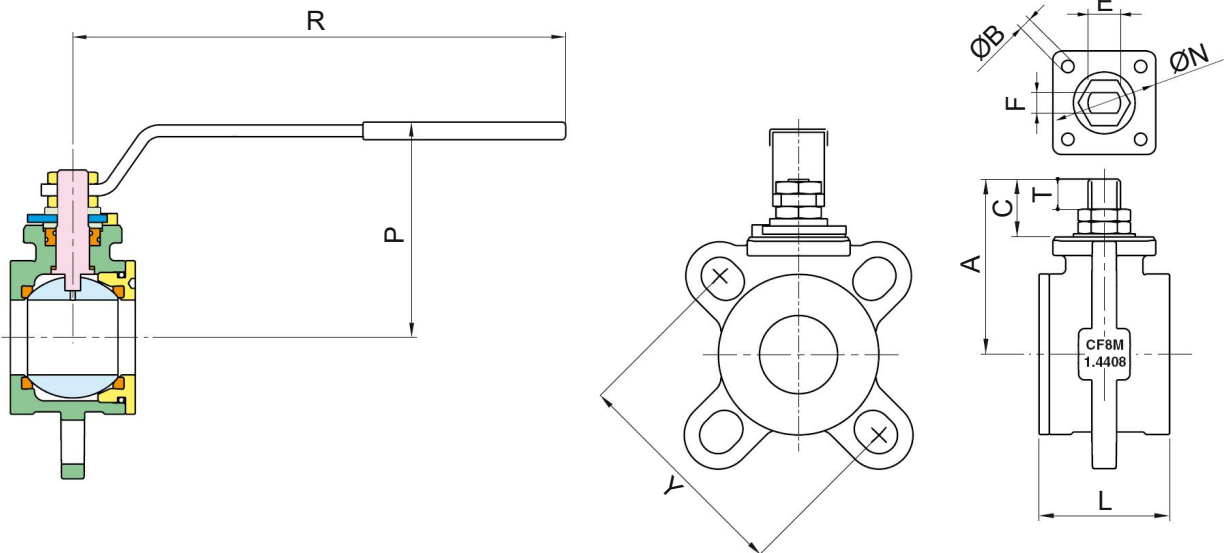
Lockable hand lever in open and closed position.

Mounting pad acc. to ISO5211 for pneumatic or electric actuator.

Antistatic device.

Technical Features

Body:	Stainless steel A351-CF8M
Ball:	Stainless steel A182-F316
Stem:	Stainless steel A182-F316
Hand lever:	Carbon steel
Bolts and nuts:	Carbon steel
Ball seats:	PTFE
Stem seats:	PTFE and FKM (Viton®)
Temperature range:	-20...+160°C

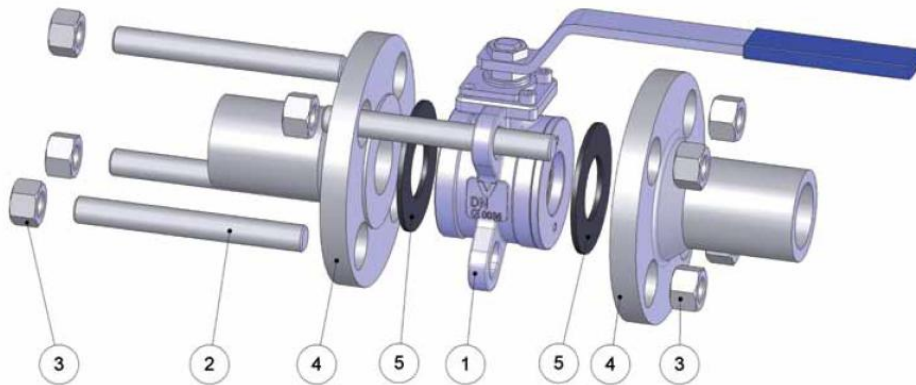


Dimensions

DN	Type	ISO5211	Y	L	R	P	A	C	T	E	F	ØN	B	Kv	PN	Kg
25	725000-DN25	F04	PN10/16/40-ANSI150	46,0	174	91	71,5	23,0	10,5	M12	8	42	M5	43	40	1,30
32	725000-DN32	F04	PN10/16/40-ANSI150	54,0	174	95	75,0	23,0	10,5	M12	8	42	M5	89	40	1,65
40	725000-DN40	F05	PN10/16/40-ANSI150	63,5	250	110	85,0	28,0	15,0	M16	10	50	M6	230	40	2,15
50	725000-DN50	F05	PN10/16/40-ANSI150	82,0	250	119	93,5	28,0	15,0	M16	10	50	M6	265	40	3,75
65	725000-DN65	F07	PN10/16-ANSI150	103,0	321	145	121,5	33,5	18,0	M20	14	70	M8	540	20	7,35
80	725000-DN80	F07	PN10/16-ANSI150	122,0	321	154	131,0	33,5	18,0	M20	14	70	M8	873	20	10,30
100	725000-DN100	F07	PN10/16-ANSI150	152,0	321	167	144,0	33,5	18,0	M20	14	70	M8	1390	20	16,00

Wafer, Hand Lever

Assembling between flanges

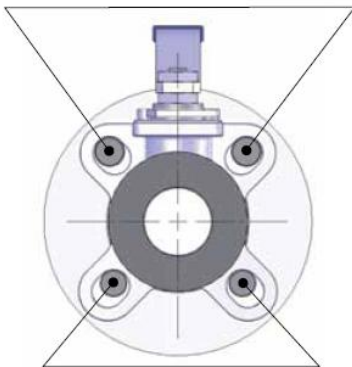


Pos	Part name
1	Ball valve
2	Bolts
3	Nuts
4	Flange
5	Tightening seal

Valve alignment for sizes DN25 - 80

For PN16 flanges:

Insert the 2 upper bolts first and let the valve lean on these before the 2 bottom bolts are inserted.
Tighten the nuts.



Valve alignment for sizes DN25-80

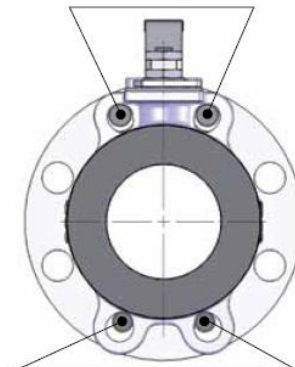
For ANSI150 flanges:

Insert the 2 bottom bolts first and then let the valve lean on these before the upper bolts are inserted.
Tighten the nuts.

Valve alignment for size DN100

For ANSI150 flanges:

Insert the 2 upper bolts first and let the valve lean on these before the 2 bottom bolts are inserted.
Tighten the nuts.



Valve alignment for size DN100

For PN16 flanges:

Insert the 2 bottom bolts first and let the valve lean on these before the 2 upper bolts are inserted.
Tighten the nuts.