

3/2 - Direct acting

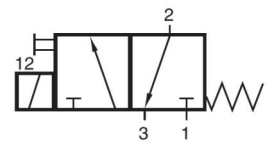


QBE1M

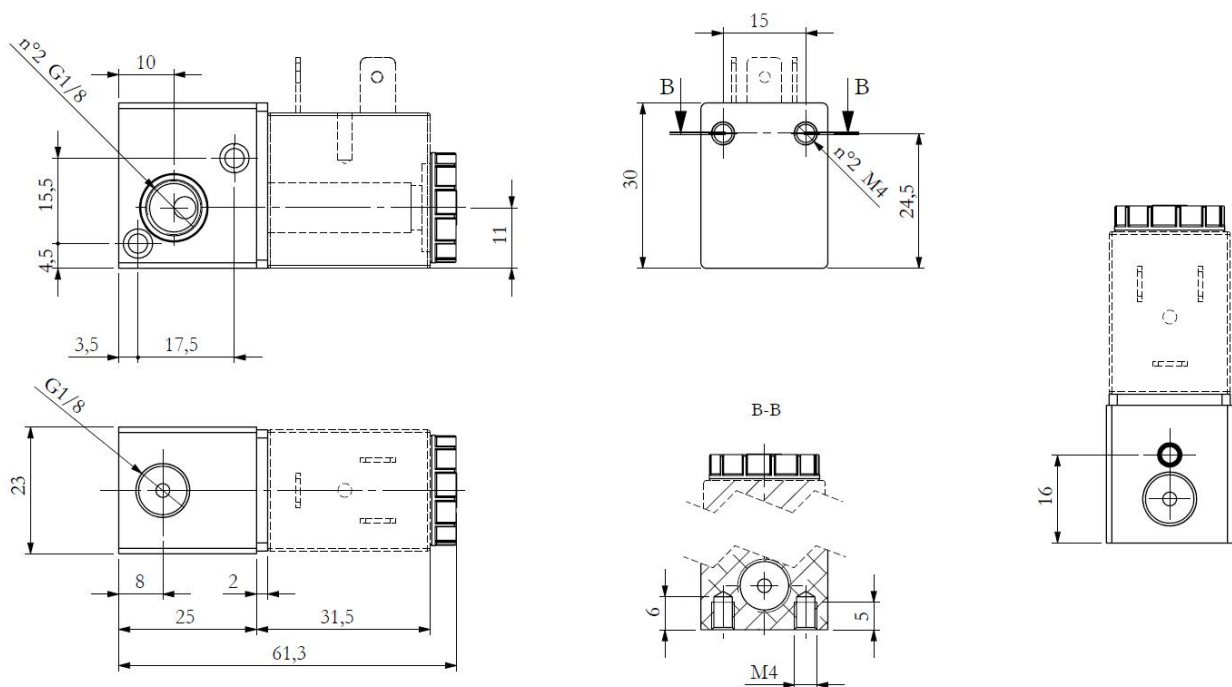
Direct actuated solenoid valve in 3/2 version. This series can be purchased as single solenoid valve or assembled in manifold, with a quick and easy to mount assembly kit. Available with manual override.

Technical Features

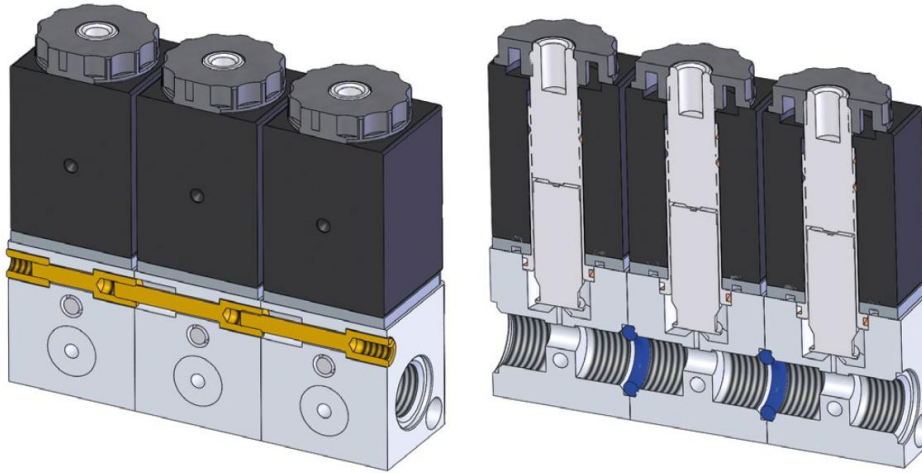
Pressure range:	0 - 10 bar
Orifice:	Ø 1,2 mm
Nominal air flow:	80NI/min
Connection:	Female thread 1/8"
Voltage:	24, 110, 230V/50-60Hz ±10% 2,5W 12, 24VDC ±10% 3,5VA
Temperature range:	Ambient: -10...+50°C Media: 0...+40°C
Body:	Aluminium, anodized
Inner parts:	Brass, steel, NBR
Duty cycle:	100% ED-VDE0580
Electric connection:	Connector acc. to DIN 436 50 typ B (option)
Weight:	0,12 Kg
Note:	Manual override



Dimensions



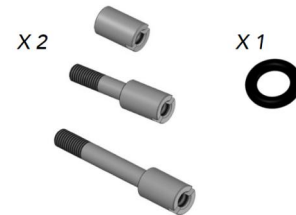
QBE1M, Manifold



Mounting kits

QBE-FMK

Mounting kit to assemble the first valve with the second valve in a manifold.



QBE-EMK

Mounting kit to assemble each extra valve added to a manifold. One kit is required per extra valve to be assembled.



Dimensions

